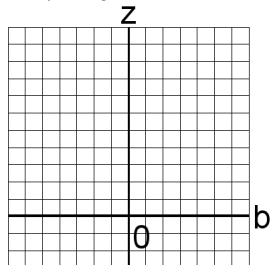


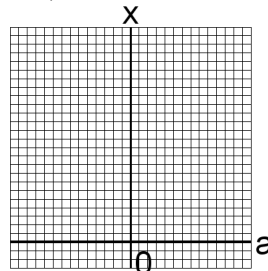
Graficar Sistemas Lineales (B)

Resuelva cada sistema de ecuaciones graficando.

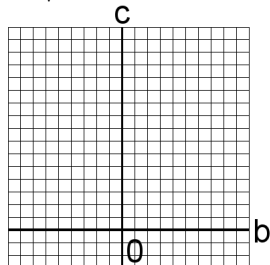
1. $5b + 4z = 41$
 $2b + 3z = 22$



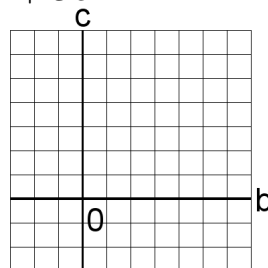
4. $6a + x = 25$
 $2a + 2x = 10$



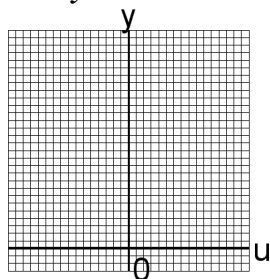
2. $3b + 4c = 27$
 $5b + 2c = 31$



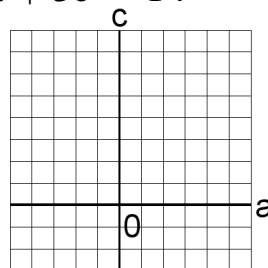
5. $b + 6c = 36$
 $b + 3c = 21$



3. $6u + y = 29$
 $u + 6y = 34$



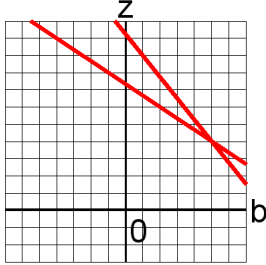
6. $2a + c = 8$
 $a + 3c = 14$



Graficar Sistemas Lineales (B) Answers

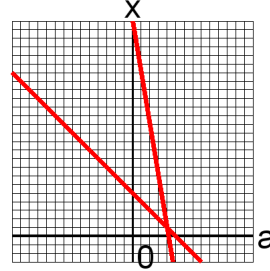
Resuelva cada sistema de ecuaciones graficando.

1. $5b + 4z = 41$
 $2b + 3z = 22$



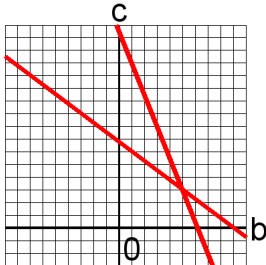
$b = 5, z = 4$

4. $6a + x = 25$
 $2a + 2x = 10$



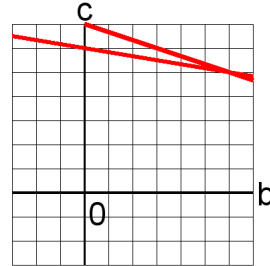
$a = 4, x = 1$

2. $3b + 4c = 27$
 $5b + 2c = 31$



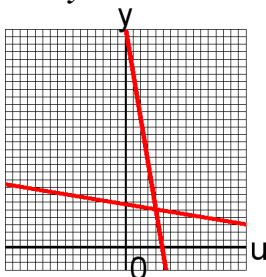
$b = 5, c = 3$

5. $b + 6c = 36$
 $b + 3c = 21$



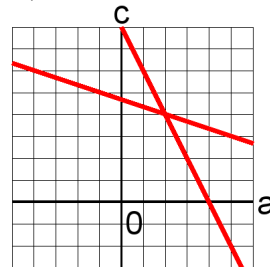
$b = 6, c = 5$

3. $6u + y = 29$
 $u + 6y = 34$



$u = 4, y = 5$

6. $2a + c = 8$
 $a + 3c = 14$



$a = 2, c = 4$