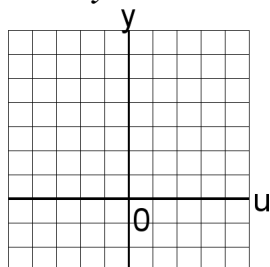


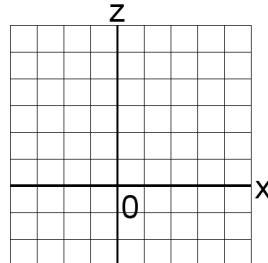
Graficar Sistemas Lineales (E)

Resuelva cada sistema de ecuaciones graficando.

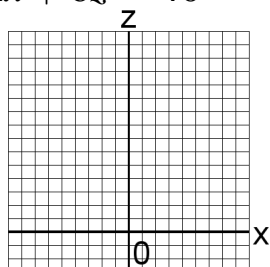
1. $3u + 3y = 21$
 $2u + 3y = 18$



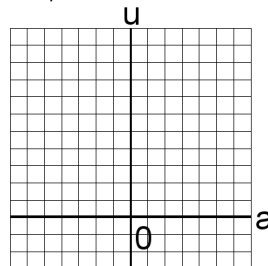
4. $2x + 3z = 16$
 $2x + 4z = 20$



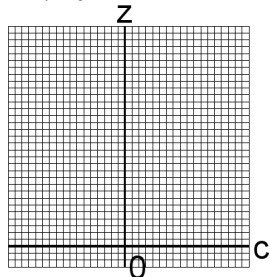
2. $6x + 3z = 45$
 $2x + 6z = 40$



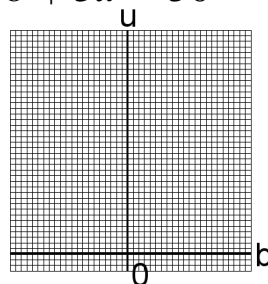
5. $a + u = 7$
 $5a + 3u = 33$



3. $3c + 4z = 26$
 $5c + z = 32$



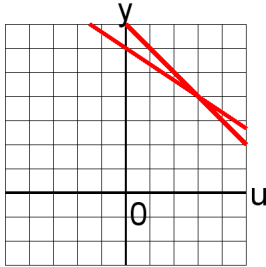
6. $6b + u = 40$
 $5b + 5u = 50$



Graficar Sistemas Lineales (E) Answers

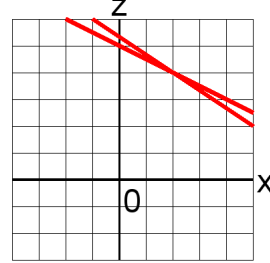
Resuelva cada sistema de ecuaciones graficando.

1. $3u + 3y = 21$
 $2u + 3y = 18$



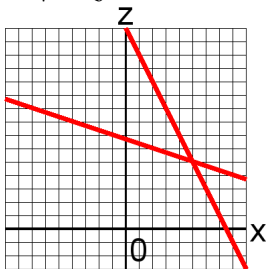
$u = 3, y = 4$

4. $2x + 3z = 16$
 $2x + 4z = 20$



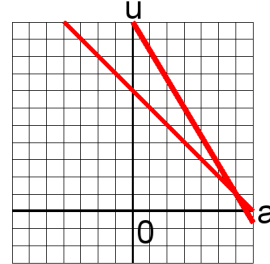
$x = 2, z = 4$

2. $6x + 3z = 45$
 $2x + 6z = 40$



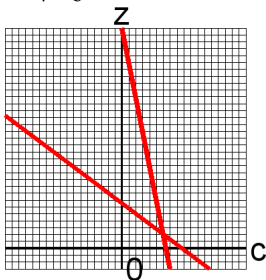
$x = 5, z = 5$

5. $a + u = 7$
 $5a + 3u = 33$



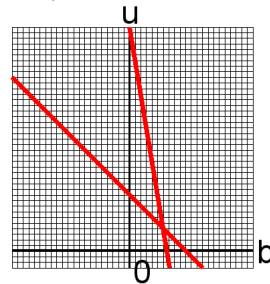
$a = 6, u = 1$

3. $3c + 4z = 26$
 $5c + z = 32$



$c = 6, z = 2$

6. $6b + u = 40$
 $5b + 5u = 50$



$b = 6, u = 4$