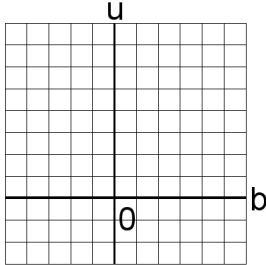


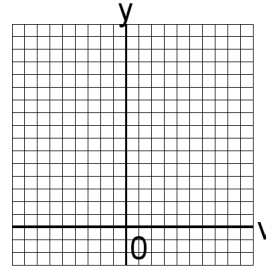
# Graficar Sistemas Lineales (F)

Resuelva cada sistema de ecuaciones graficando.

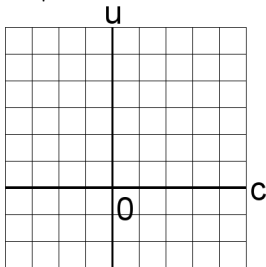
1.  $2b + 5u = 32$   
 $5b + 3u = 23$



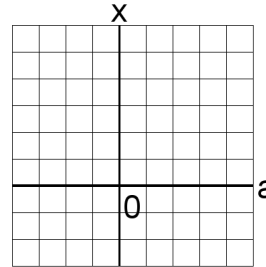
4.  $2v + 3y = 24$   
 $4v + 2y = 32$



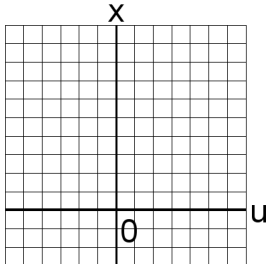
2.  $5c + 4u = 22$   
 $3c + 5u = 21$



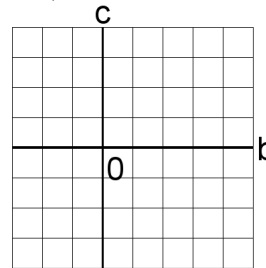
5.  $2a + 3x = 16$   
 $6a + 6x = 36$



3.  $3u + 4x = 38$   
 $2u + 5x = 37$



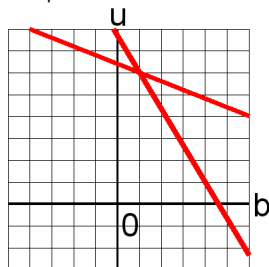
6.  $b + 5c = 9$   
 $3b + 4c = 16$



# Graficar Sistemas Lineales (F) Answers

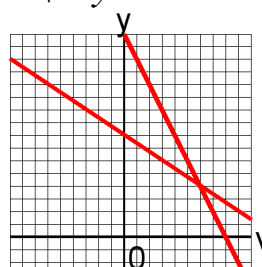
Resuelva cada sistema de ecuaciones graficando.

1.  $2b + 5u = 32$   
 $5b + 3u = 23$



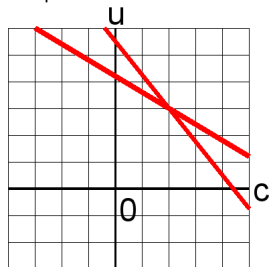
$b = 1, u = 6$

4.  $2v + 3y = 24$   
 $4v + 2y = 32$



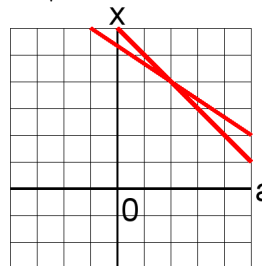
$v = 6, y = 4$

2.  $5c + 4u = 22$   
 $3c + 5u = 21$



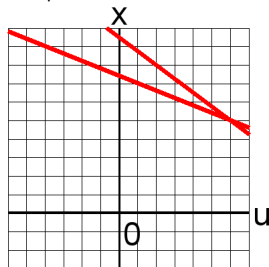
$c = 2, u = 3$

5.  $2a + 3x = 16$   
 $6a + 6x = 36$



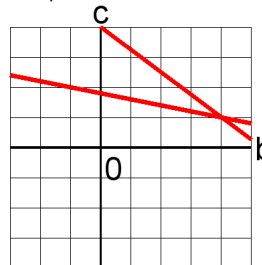
$a = 2, x = 4$

3.  $3u + 4x = 38$   
 $2u + 5x = 37$



$u = 6, x = 5$

6.  $b + 5c = 9$   
 $3b + 4c = 16$



$b = 4, c = 1$