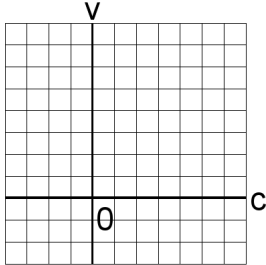


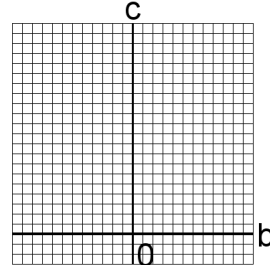
Graficar Sistemas Lineales (H)

Resuelva cada sistema de ecuaciones graficando.

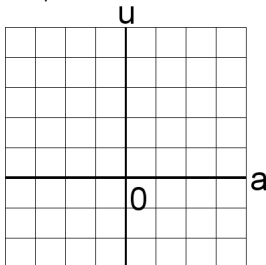
1. $3c + 5v = 38$
 $c + 4v = 22$



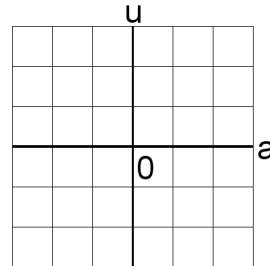
4. $3b + 5c = 45$
 $6b + 2c = 42$



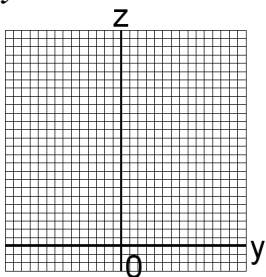
2. $4a + 4u = 20$
 $3a + 4u = 19$



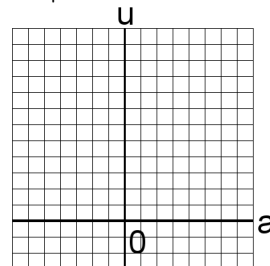
5. $5a + 4u = 9$
 $a + 2u = 3$



3. $3y + 3z = 30$
 $5y + z = 26$



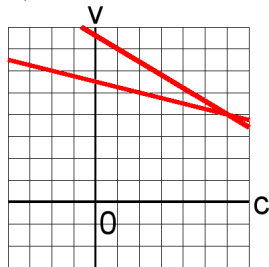
6. $5a + 3u = 34$
 $5a + 6u = 43$



Graficar Sistemas Lineales (H) Answers

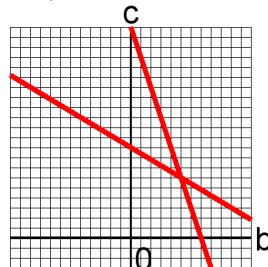
Resuelva cada sistema de ecuaciones graficando.

1. $3c + 5v = 38$
 $c + 4v = 22$



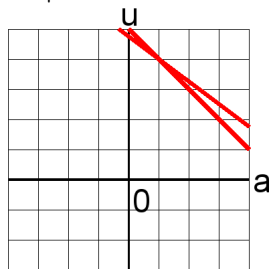
$c = 6, v = 4$

4. $3b + 5c = 45$
 $6b + 2c = 42$



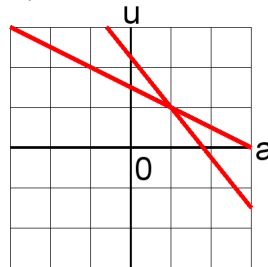
$b = 5, c = 6$

2. $4a + 4u = 20$
 $3a + 4u = 19$



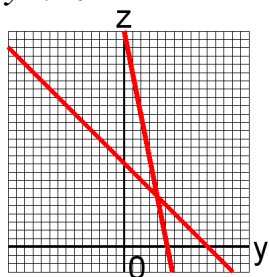
$a = 1, u = 4$

5. $5a + 4u = 9$
 $a + 2u = 3$



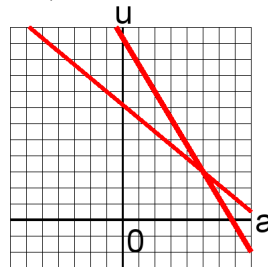
$a = 1, u = 1$

3. $3y + 3z = 30$
 $5y + z = 26$



$y = 4, z = 6$

6. $5a + 3u = 34$
 $5a + 6u = 43$



$a = 5, u = 3$