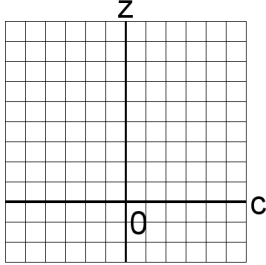


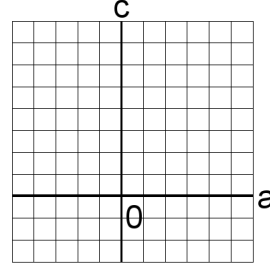
# Graficar Sistemas Lineales (J)

Resuelva cada sistema de ecuaciones graficando.

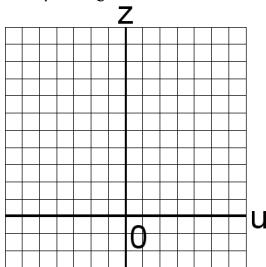
1.  $5c + 2z = 13$   
 $5c + z = 9$



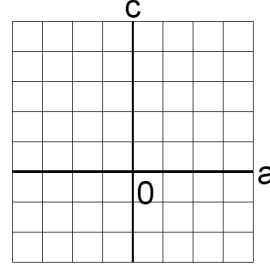
4.  $2a + 2c = 16$   
 $4a + 5c = 36$



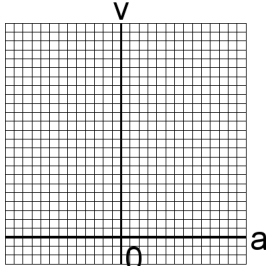
2.  $6u + 4z = 42$   
 $3u + 4z = 33$



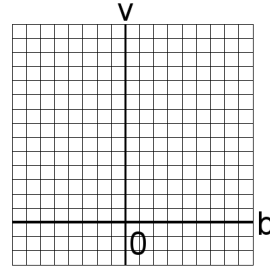
5.  $a + 6c = 15$   
 $4a + 5c = 22$



3.  $2a + 2v = 18$   
 $6a + v = 24$



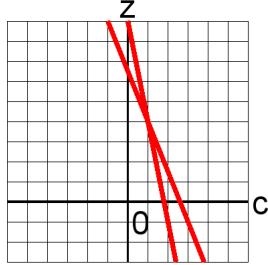
6.  $6b + 5v = 66$   
 $2b + 5v = 42$



# Graficar Sistemas Lineales (J) Answers

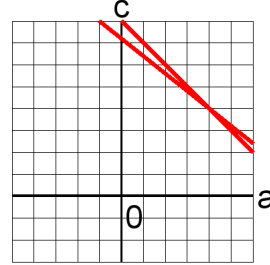
Resuelva cada sistema de ecuaciones graficando.

1.  $5c + 2z = 13$   
 $5c + z = 9$



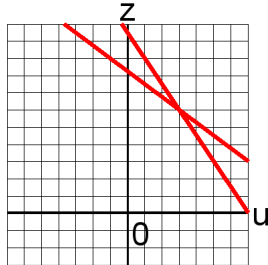
$c = 1, z = 4$

4.  $2a + 2c = 16$   
 $4a + 5c = 36$



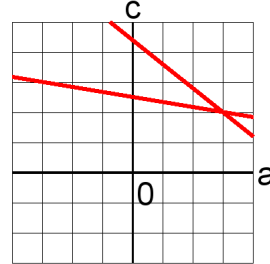
$a = 4, c = 4$

2.  $6u + 4z = 42$   
 $3u + 4z = 33$



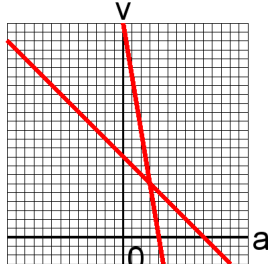
$u = 3, z = 6$

5.  $a + 6c = 15$   
 $4a + 5c = 22$



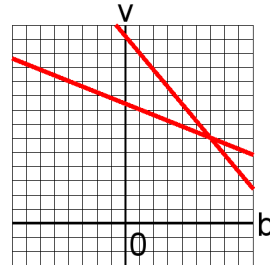
$a = 3, c = 2$

3.  $2a + 2v = 18$   
 $6a + v = 24$



$a = 3, v = 6$

6.  $6b + 5v = 66$   
 $2b + 5v = 42$



$b = 6, v = 6$