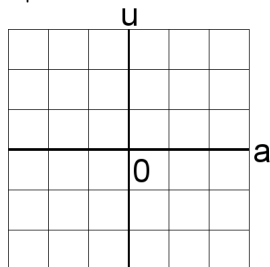


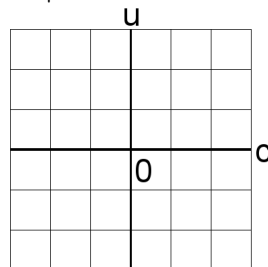
Graficar Sistemas Lineales (C)

Resuelva cada sistema de ecuaciones graficando.

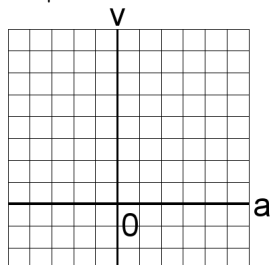
1. $2a + 3u = 2$
 $a + 2u = 2$



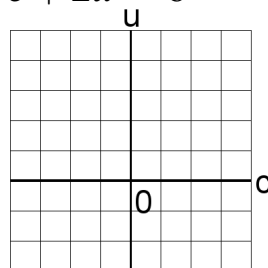
4. $6c + 4u = -2$
 $6c + 2u = -4$



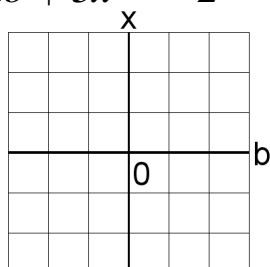
2. $4a + 5v = 28$
 $6a + 3v = 24$



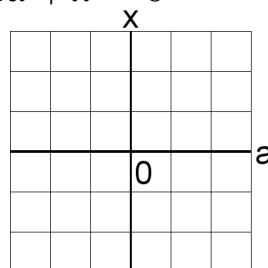
5. $3c + u = 5$
 $3c + 2u = 6$



3. $6b + 4x = -2$
 $6b + 5x = -2$



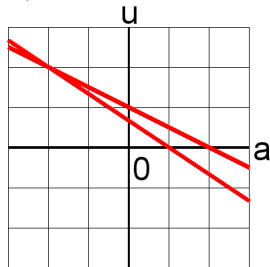
6. $a + 3x = 0$
 $4a + x = 0$



Graficar Sistemas Lineales (C) Answers

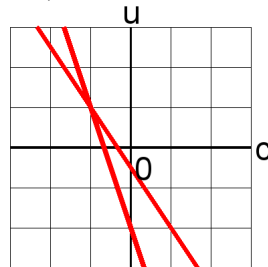
Resuelva cada sistema de ecuaciones graficando.

1. $2a + 3u = 2$
 $a + 2u = 2$



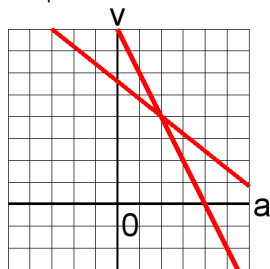
$a = -2, u = 2$

4. $6c + 4u = -2$
 $6c + 2u = -4$



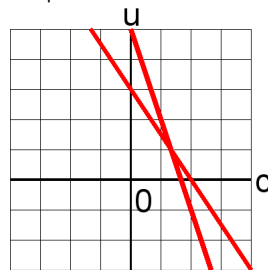
$c = -1, u = 1$

2. $4a + 5v = 28$
 $6a + 3v = 24$



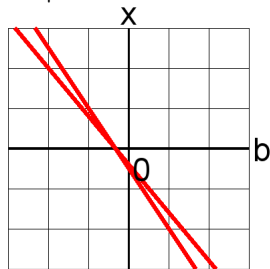
$a = 2, v = 4$

5. $3c + u = 5$
 $3c + 2u = 6$



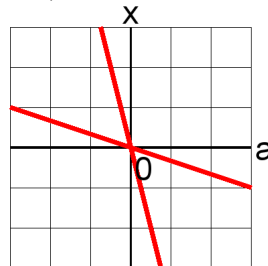
$c = \frac{4}{3}, u = 1$

3. $6b + 4x = -2$
 $6b + 5x = -2$



$b = -\frac{1}{3}, x = 0$

6. $a + 3x = 0$
 $4a + x = 0$



$a = 0, x = 0$