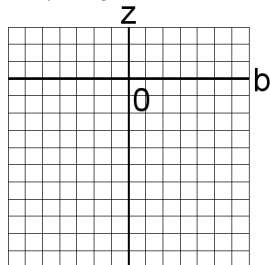


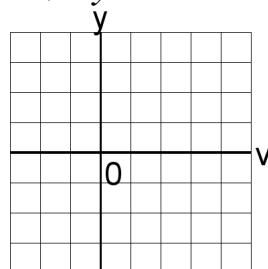
Graficar Sistemas Lineales (E)

Resuelva cada sistema de ecuaciones graficando.

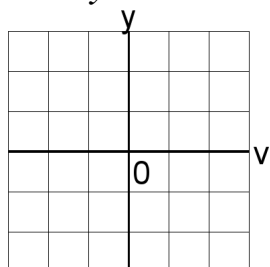
1. $3b + 2z = -14$
 $5b + 2z = -22$



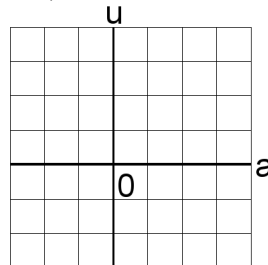
4. $3v + 3y = 9$
 $3v + 5y = 7$



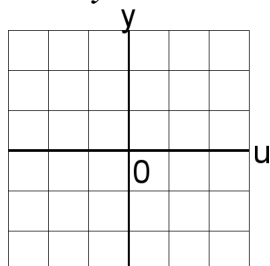
2. $5v + 5y = 9$
 $5v + 6y = 11$



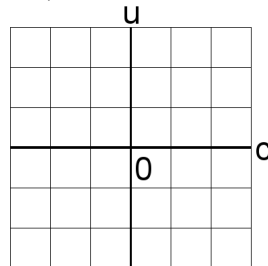
5. $4a + 5u = 13$
 $4a + 2u = 7$



3. $3u + 3y = -4$
 $6u + 3y = -7$



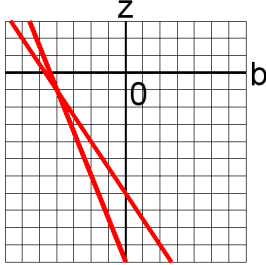
6. $5c + 6u = 6$
 $6c + 2u = 2$



Graficar Sistemas Lineales (E) Answers

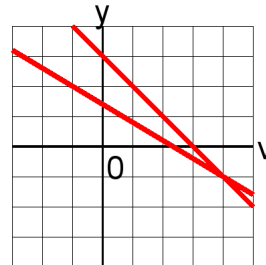
Resuelva cada sistema de ecuaciones graficando.

1. $3b + 2z = -14$
 $5b + 2z = -22$



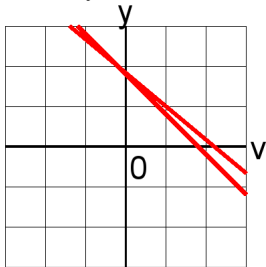
$b = -4, z = -1$

4. $3v + 3y = 9$
 $3v + 5y = 7$



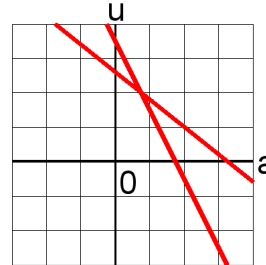
$v = 4, y = -1$

2. $5v + 5y = 9$
 $5v + 6y = 11$



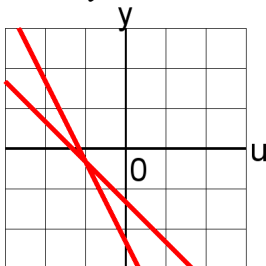
$v = -\frac{1}{5}, y = 2$

5. $4a + 5u = 13$
 $4a + 2u = 7$



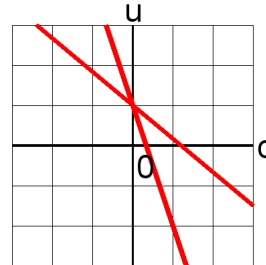
$a = \frac{3}{4}, u = 2$

3. $3u + 3y = -4$
 $6u + 3y = -7$



$u = -1, y = -\frac{1}{3}$

6. $5c + 6u = 6$
 $6c + 2u = 2$



$c = 0, u = 1$