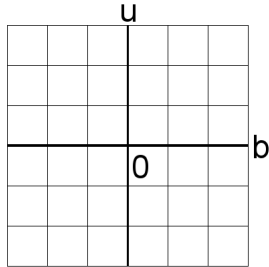


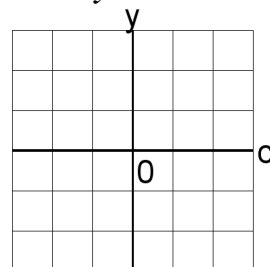
Graficar Sistemas Lineales (I)

Resuelva cada sistema de ecuaciones graficando.

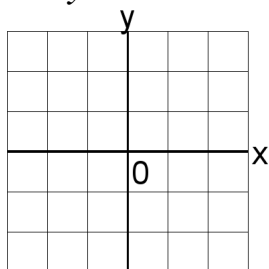
1. $4b + 5u = 1$
 $2b + 6u = -3$



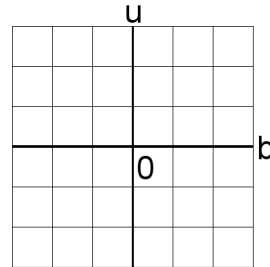
4. $4c + 2y = 2$
 $5c + 4y = 2$



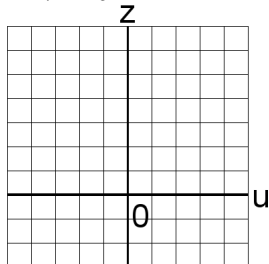
2. $5x + 3y = 3$
 $4x + y = 1$



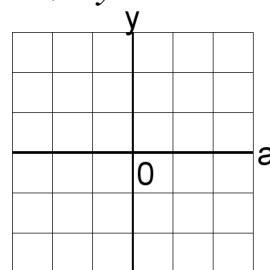
5. $5b + u = 2$
 $2b + u = 0$



3. $6u + 2z = 14$
 $3u + 6z = 22$



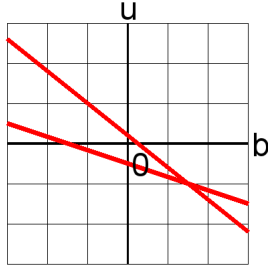
6. $6a + 5y = 0$
 $2a + 5y = 0$



Graficar Sistemas Lineales (I) Answers

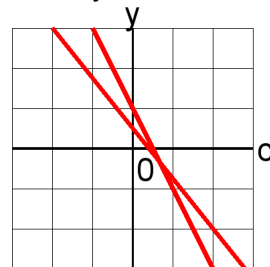
Resuelva cada sistema de ecuaciones graficando.

1. $4b + 5u = 1$
 $2b + 6u = -3$



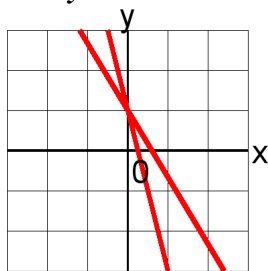
$b = \frac{3}{2}, u = -1$

4. $4c + 2y = 2$
 $5c + 4y = 2$



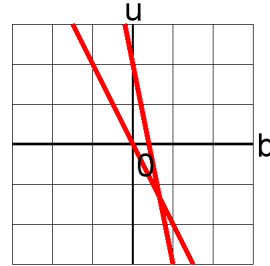
$c = \frac{2}{3}, y = -\frac{1}{3}$

2. $5x + 3y = 3$
 $4x + y = 1$



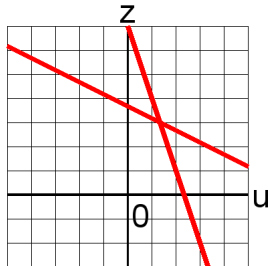
$x = 0, y = 1$

5. $5b + u = 2$
 $2b + u = 0$



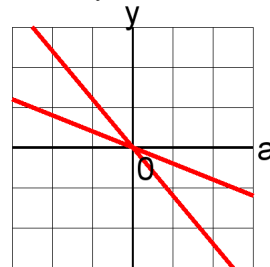
$b = \frac{2}{3}, u = -\frac{4}{3}$

3. $6u + 2z = 14$
 $3u + 6z = 22$



$u = \frac{4}{3}, z = 3$

6. $6a + 5y = 0$
 $2a + 5y = 0$



$a = 0, y = 0$