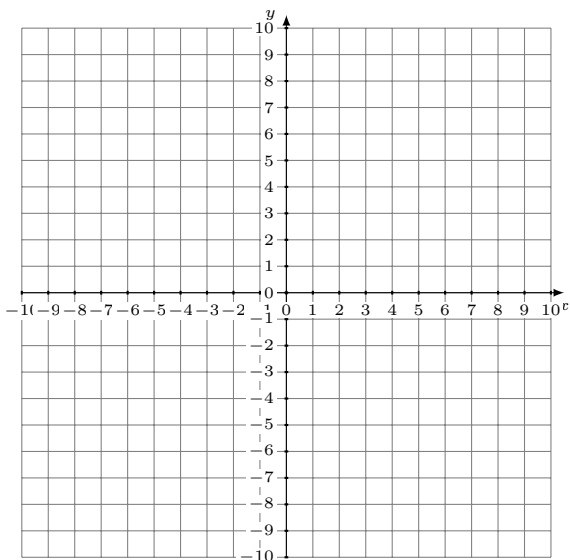


# Graficar Sistemas Lineales (B)

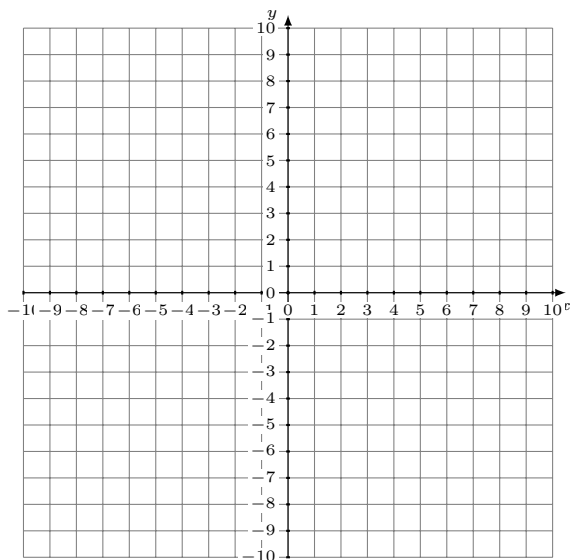
Grafique cada sistema lineal y halle su solución.

1.  $y = 3x + 7$   
 $y = \frac{8}{5}x$



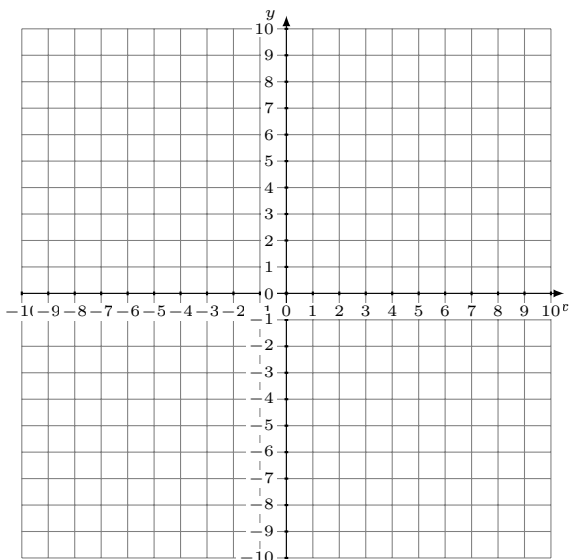
Solución: (----,----)

2.  $y = \frac{3}{2}x + 1$   
 $3x - 4y = -16$



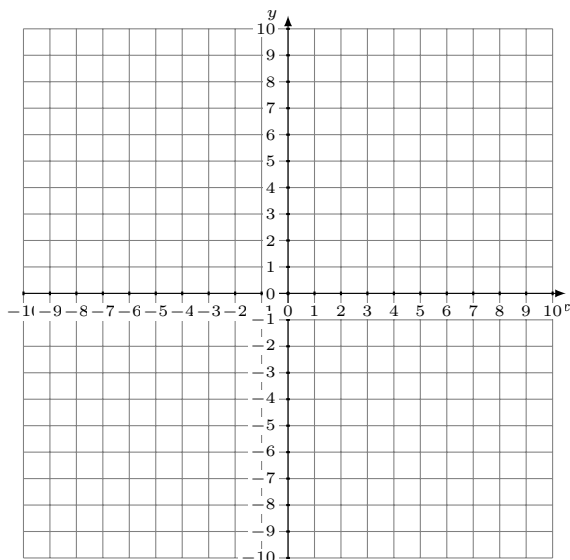
Solución: (----,----)

3.  $5x + y = -8$   
 $y = -2x - 2$



Solución: (----,----)

4.  $y = 15x - 8$   
 $y = 6x + 1$

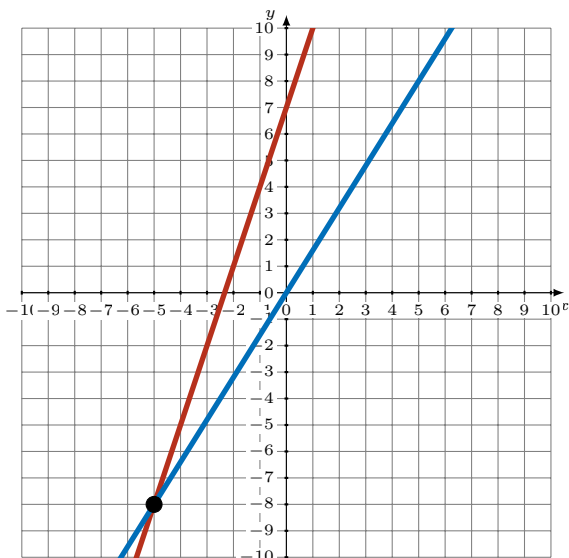


Solución: (----,----)

# Graficar Sistemas Lineales (B) Respuestas

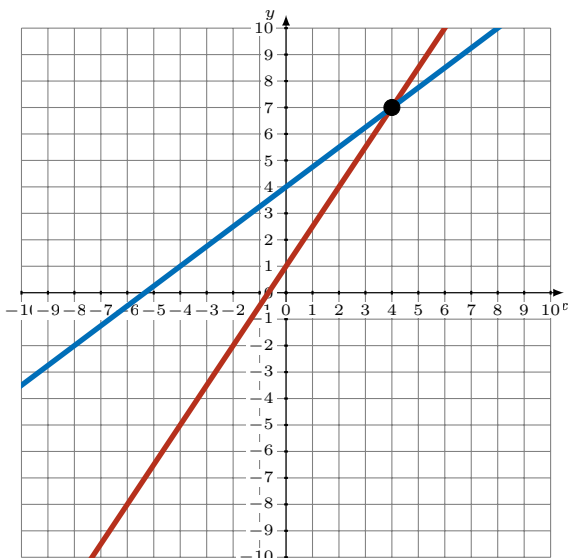
Grafique cada sistema lineal y halle su solución.

1.  $y = 3x + 7$   
 $y = \frac{8}{5}x$



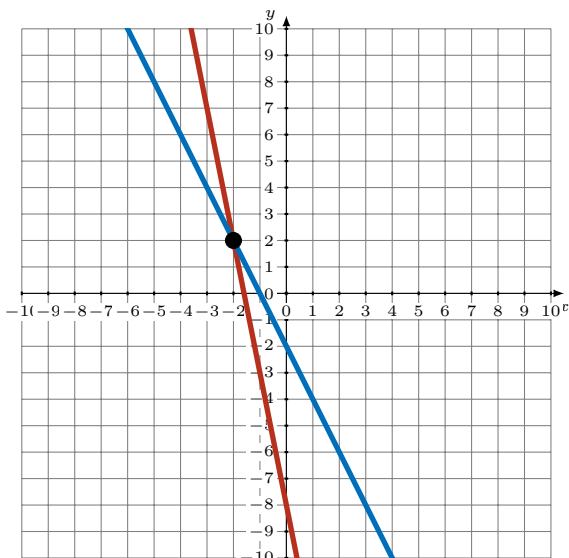
Solución:  $(-5, -8)$

2.  $y = \frac{3}{2}x + 1$   
 $3x - 4y = -16$



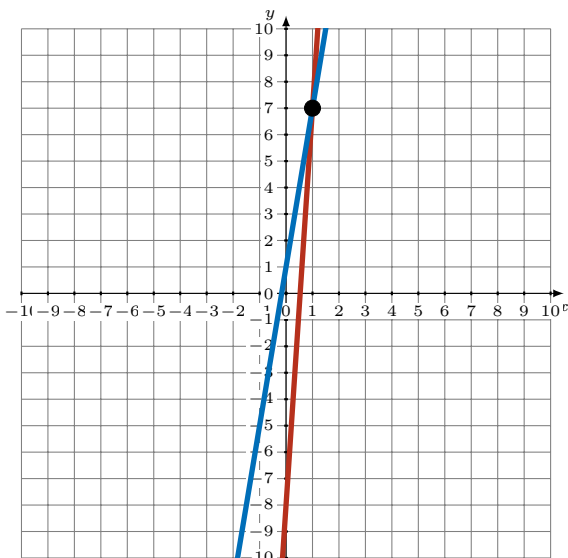
Solución:  $(4, 7)$

3.  $5x + y = -8$   
 $y = -2x - 2$



Solución:  $(-2, 2)$

4.  $y = 15x - 8$   
 $y = 6x + 1$



Solución:  $(1, 7)$