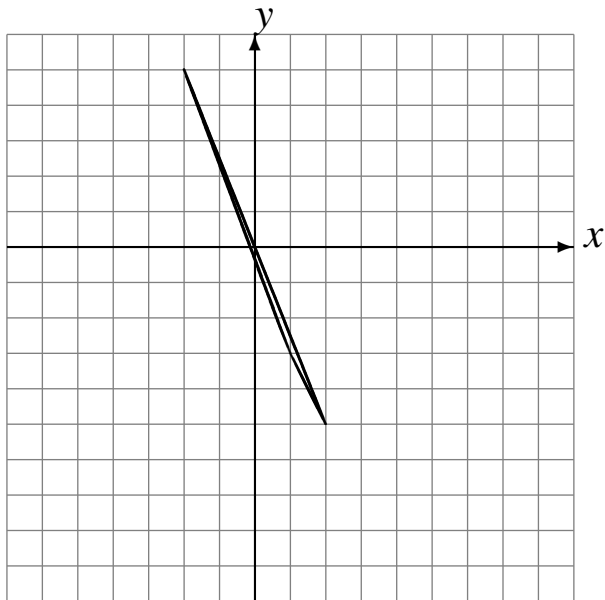


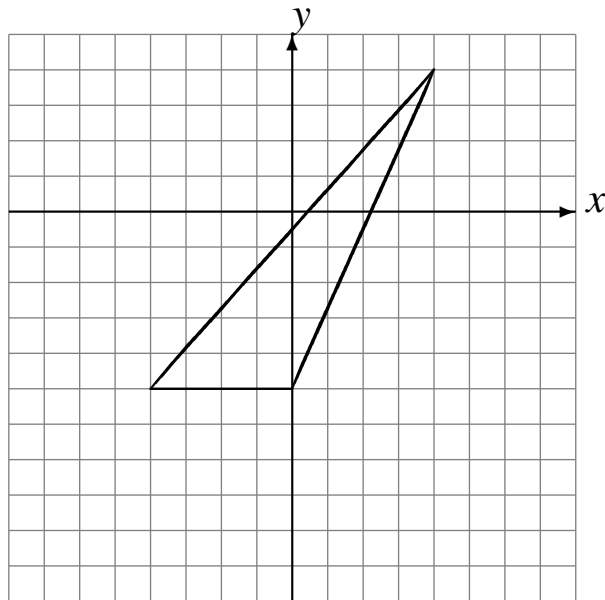
# Rotaciones (H)

Dibuje cada figura rotada.

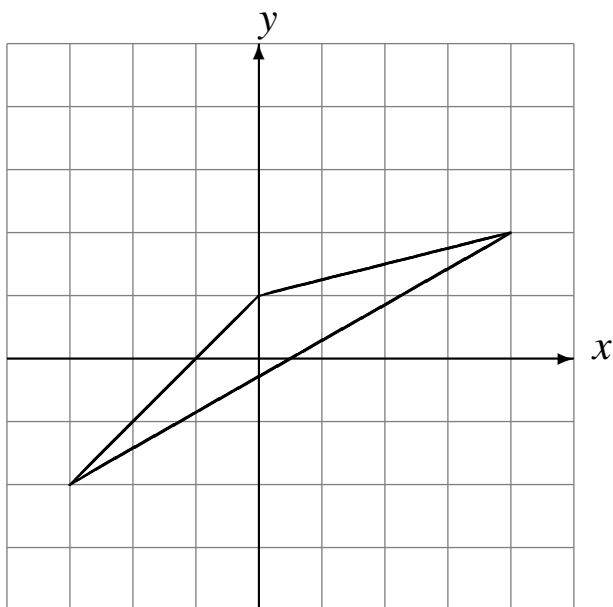
Rote  $180^\circ$  alrededor de  $(1, -2)$ .



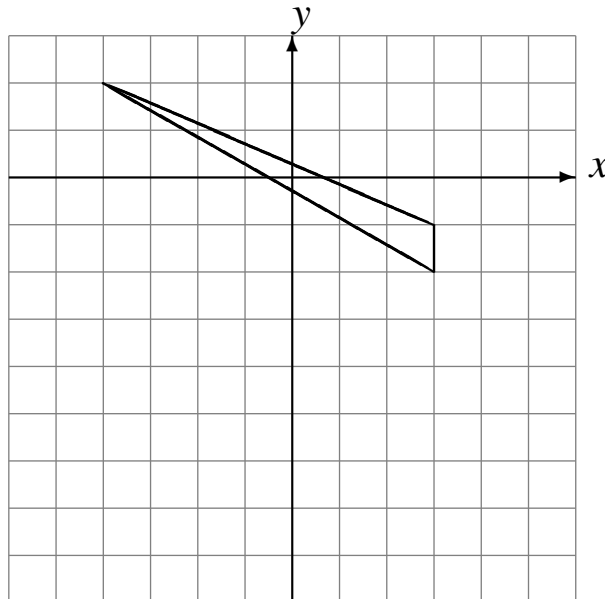
Rote  $-90^\circ$  alrededor de  $(-3, -3)$ .



Rote  $-90^\circ$  alrededor de  $(1, 0)$ .



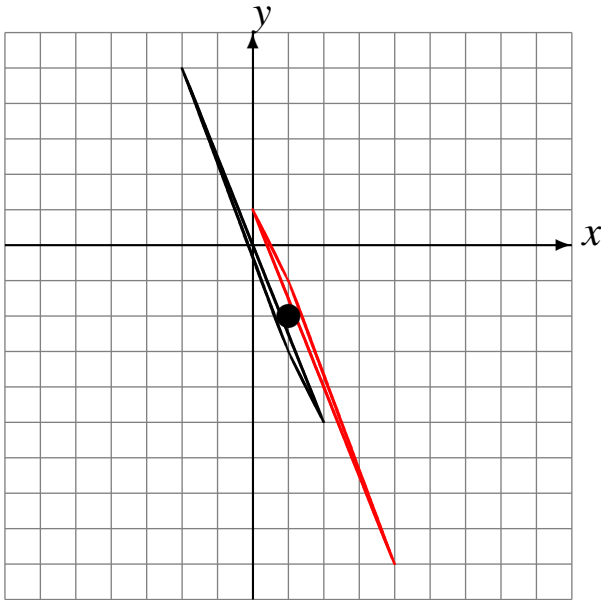
Rote  $-90^\circ$  alrededor de  $(-3, -2)$ .



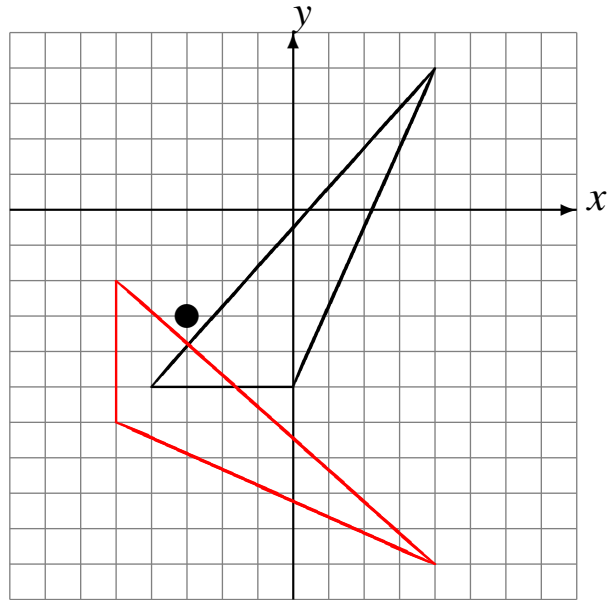
# Rotaciones (H) Respuestas

Dibuje cada figura rotada.

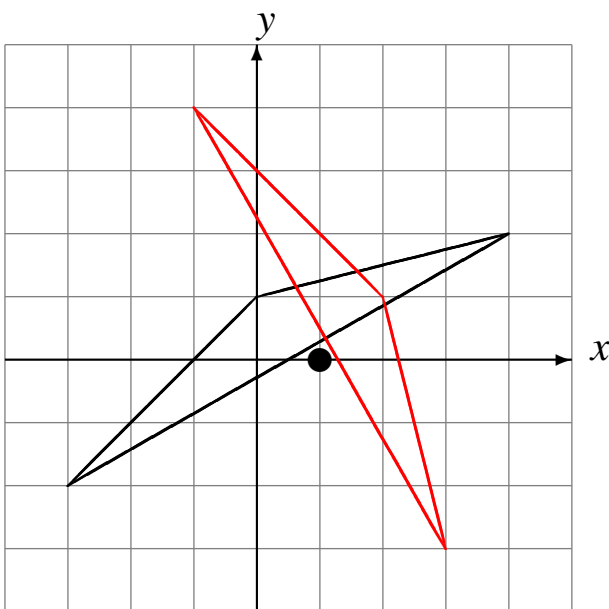
Rote  $180^\circ$  alrededor de  $(1, -2)$ .



Rote  $-90^\circ$  alrededor de  $(-3, -3)$ .



Rote  $-90^\circ$  alrededor de  $(1, 0)$ .



Rote  $-90^\circ$  alrededor de  $(-3, -2)$ .

