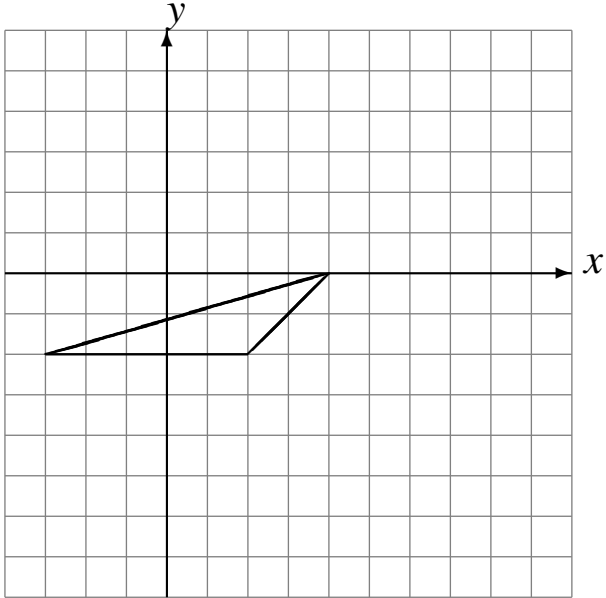


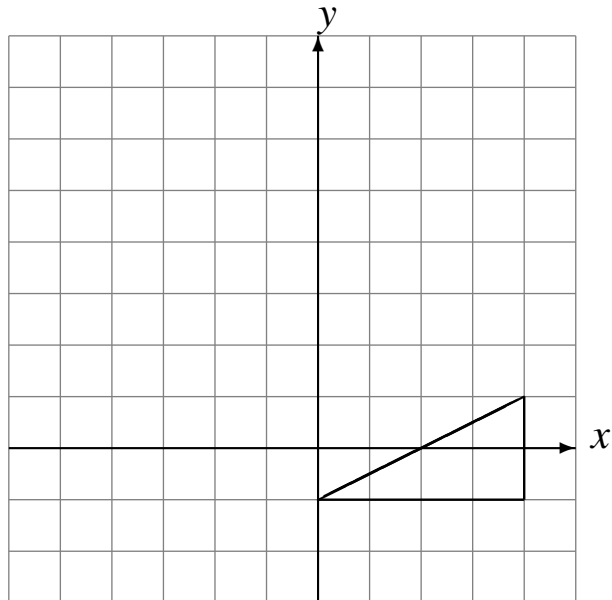
Traslaciones (J)

Dibuje cada figura trasladada.

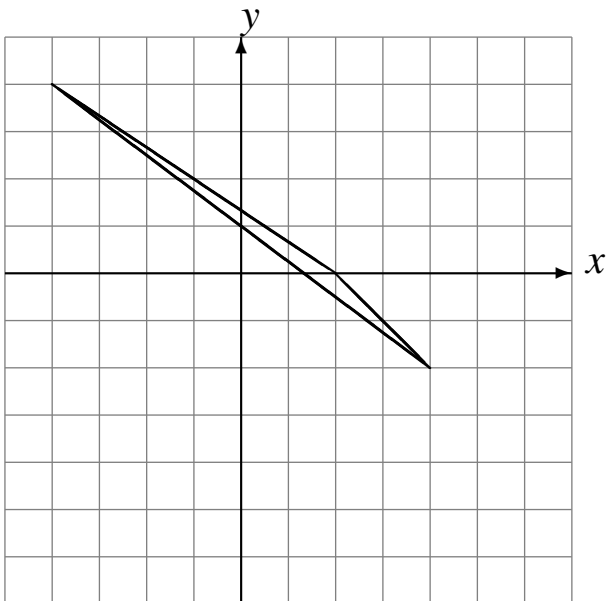
Traslade (5, 0).



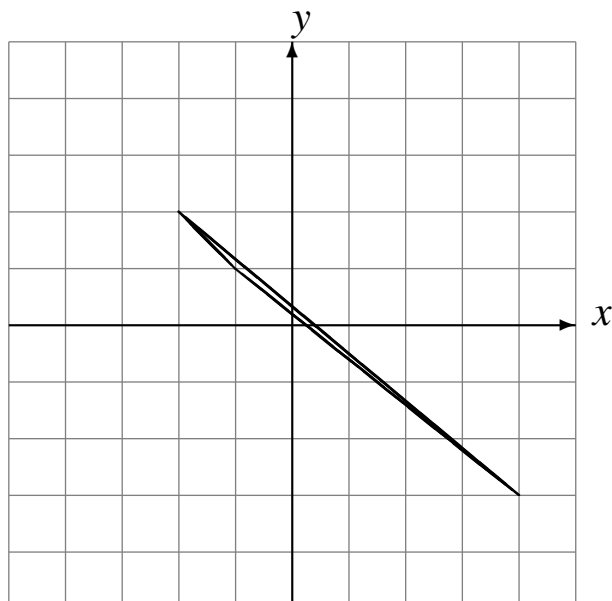
Traslade (-5, 4).



Traslade (2, -4).



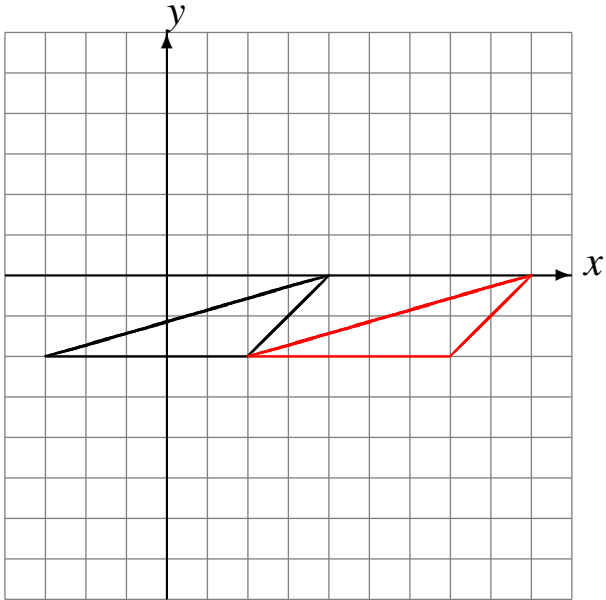
Traslade (-2, 0).



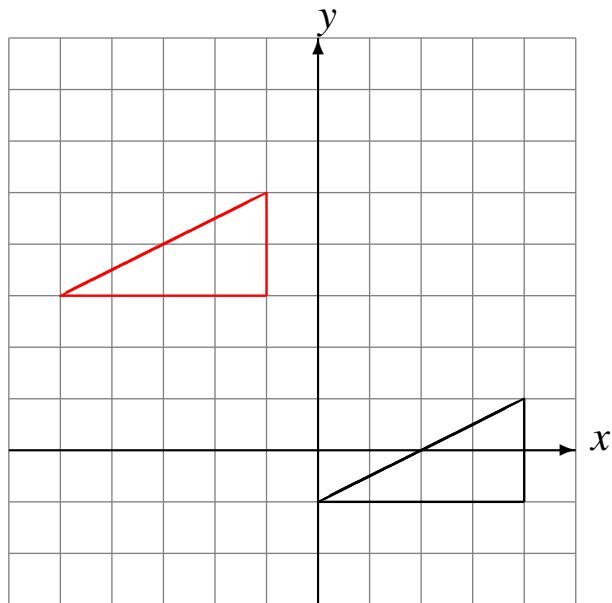
Traslaciones (J) Respuestas

Dibuje cada figura trasladada.

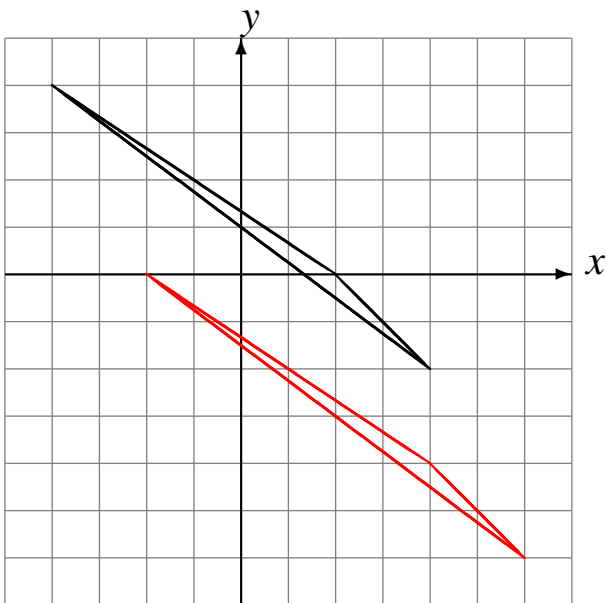
Traslade (5, 0).



Traslade (-5, 4).



Traslade (2, -4).



Traslade (-2, 0).

