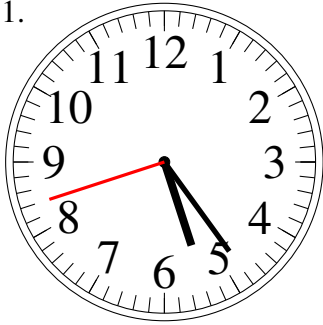


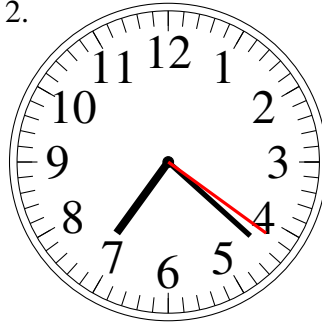
# Leer Relojes Analógicos (A)

Lea y escriba la hora en cada reloj.

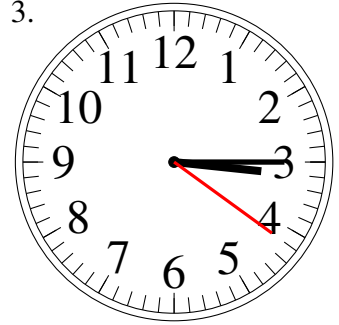
1.



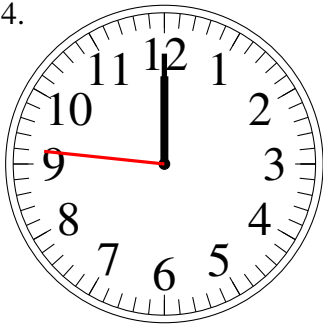
2.



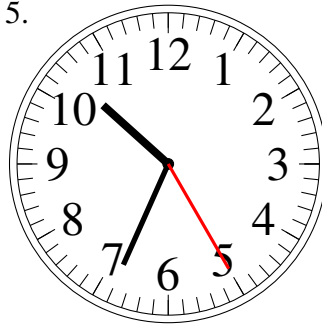
3.



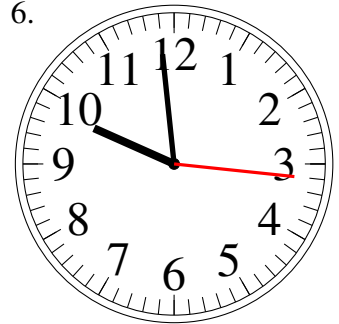
4.



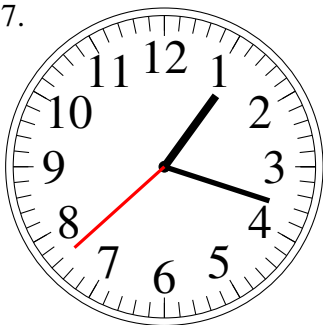
5.



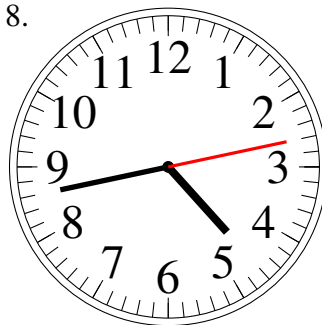
6.



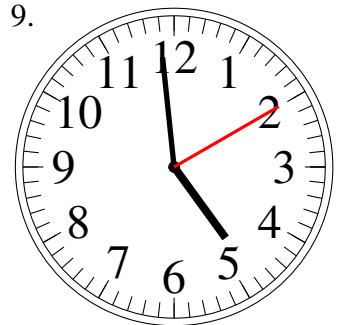
7.



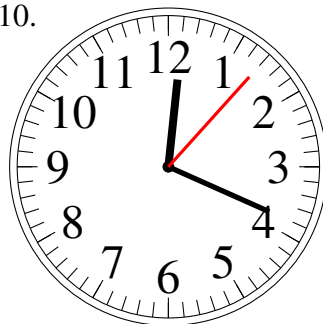
8.



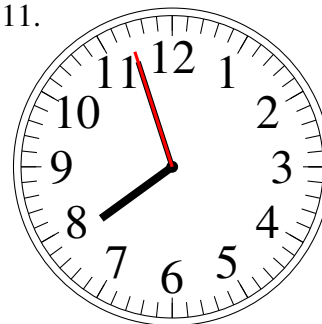
9.



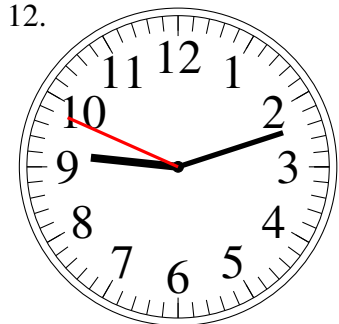
10.



11.



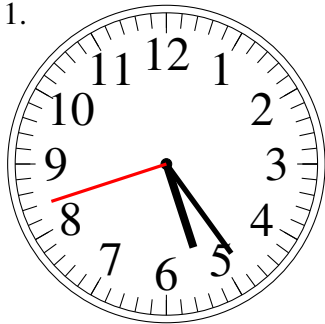
12.



# Leer Relojes Analógicos (A) Respuestas

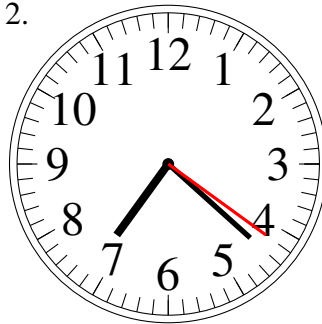
Lea y escriba la hora en cada reloj.

1.



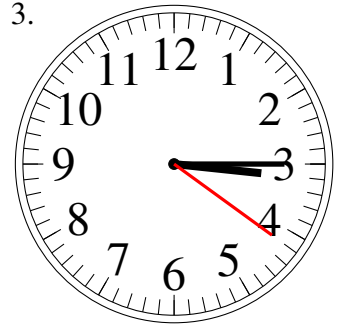
5:24.42

2.



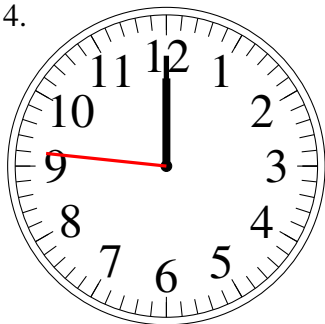
7:22.21

3.



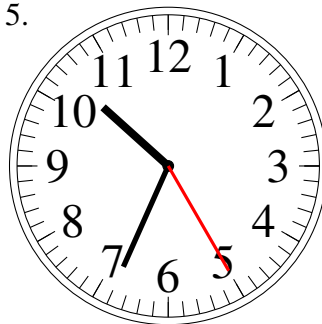
3:15.21

4.



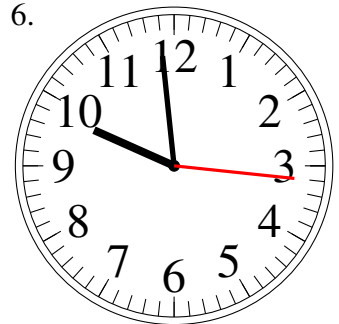
12:00.46

5.



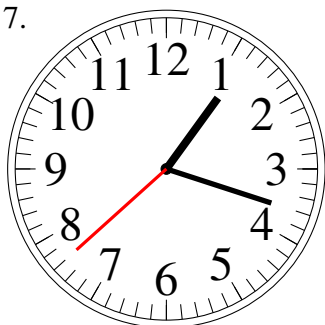
10:34.25

6.



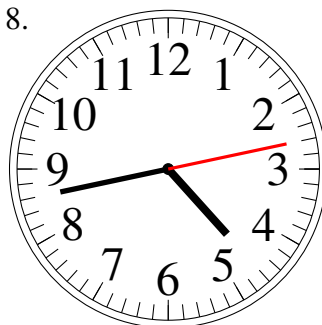
9:59.16

7.



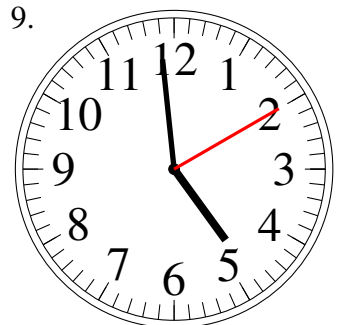
1:18.38

8.



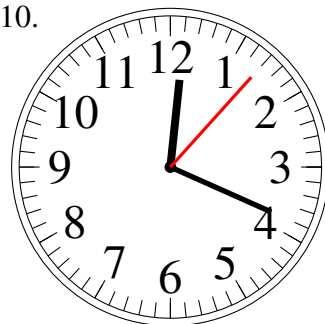
4:43.13

9.



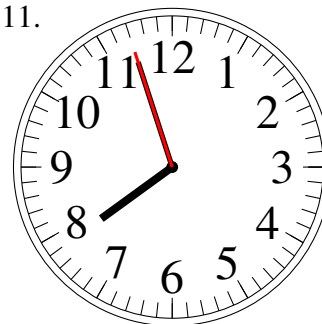
4:59.10

10.



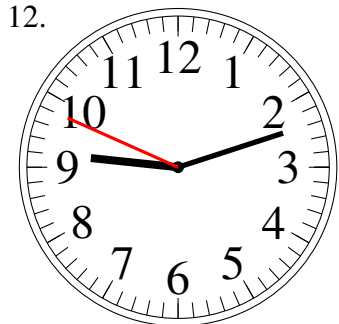
12:19.07

11.



7:57.57

12.



9:12.49